



Implementation in low-resource settings

Ana A. Baumann
Associate Professor
Division of Public Health Sciences
Washington University Medical School
Email: abaumannwalker@wustl.edu

Agenda

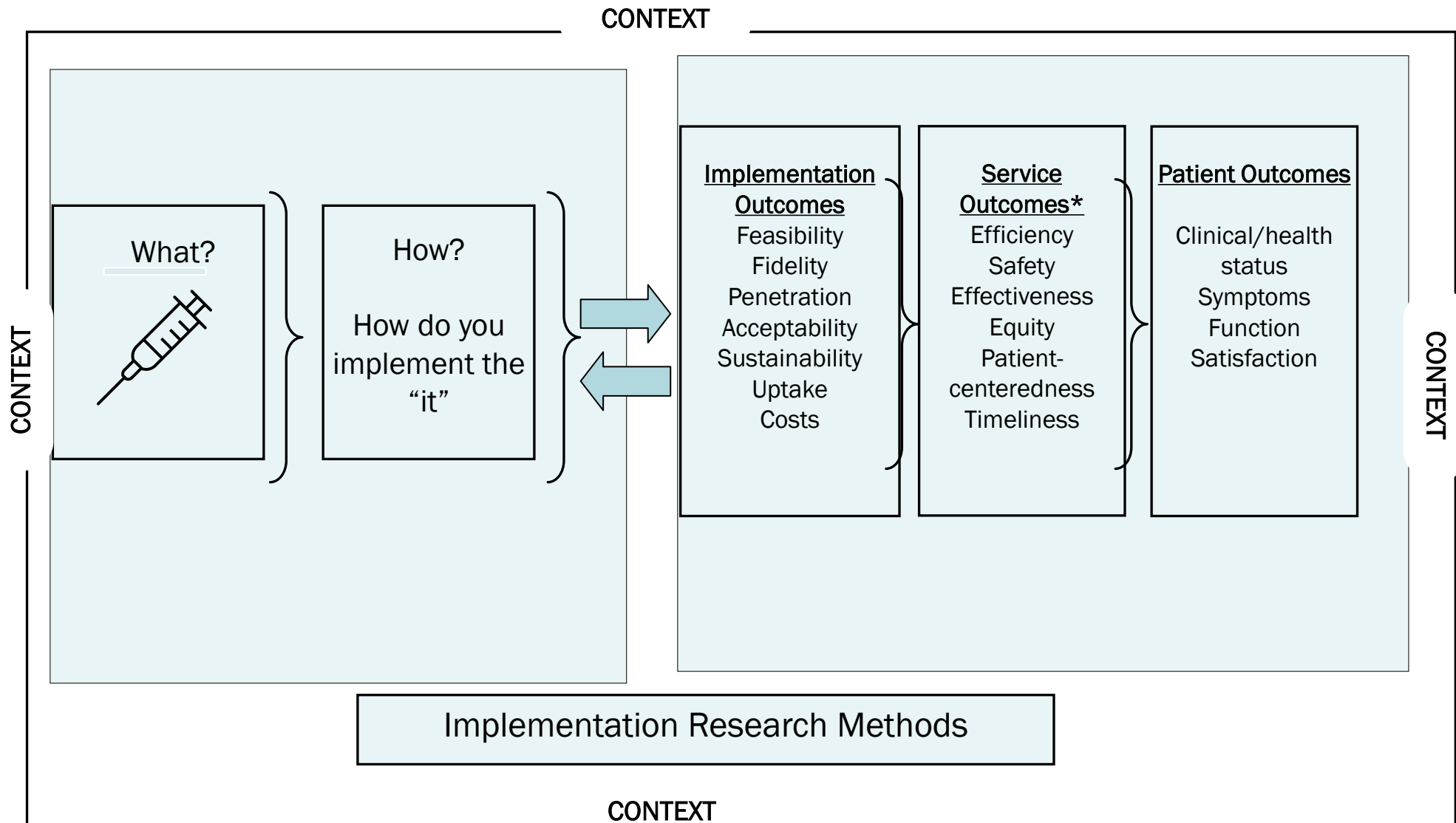
Point 1: An intervention is never “just an intervention”

Point 2: The infrastructure of the implementation process

Point 3: Logic models, theories, and mechanisms

Point 4: Adaptation





Proctor et al 2009 Admin. & Pol. in Mental Health Services

Point 1: An intervention is never “just an intervention”

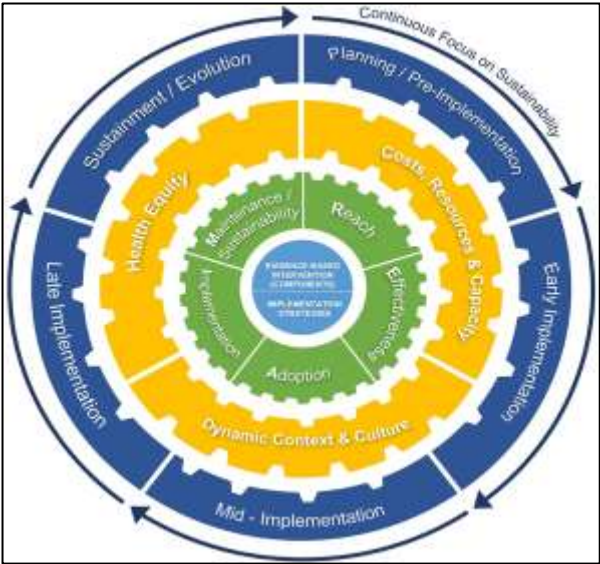


Recommendation 1:

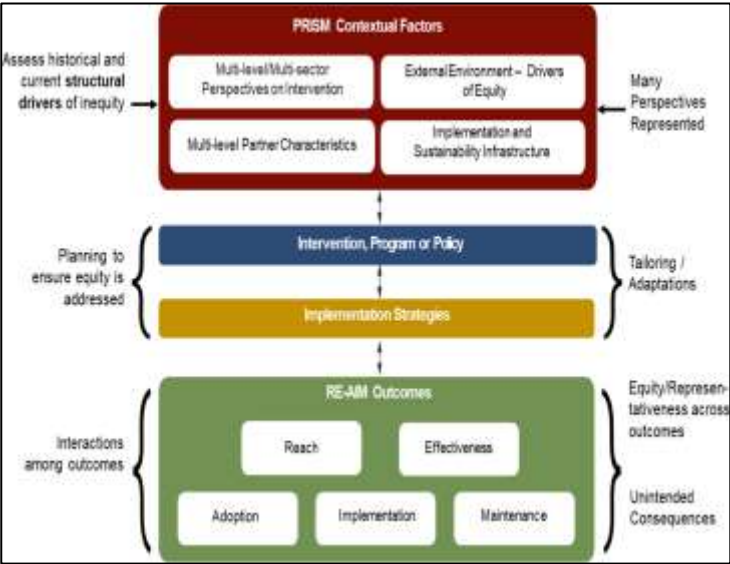
We need to talk more and be explicit about the infrastructure behind the “evidence-based” interventions, policies and practices.

- *Cotton-balls*
- *Syringes (and the right size of syringes)*
- *Disposable boxes*
- *Refrigerators*

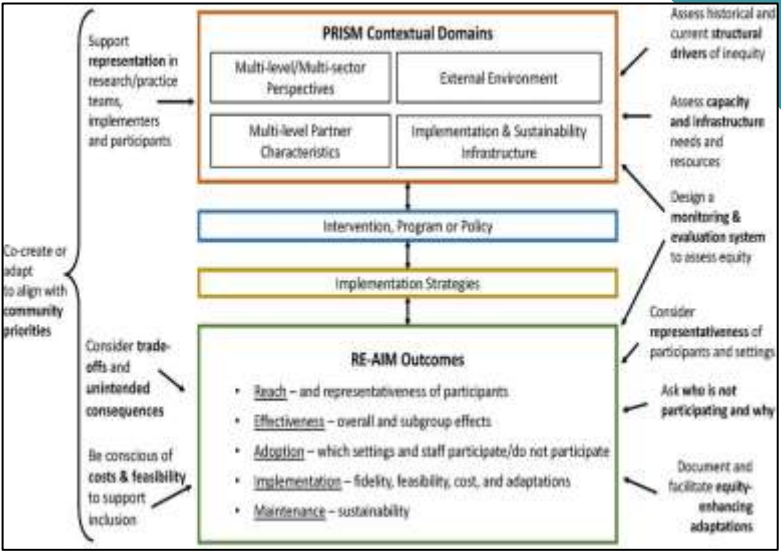
Point 2: Let's talk about outcomes.



Shelton, R. C., Chambers, D. A., & Glasgow, R. E. (2020). An extension of RE-AIM to enhance sustainability: addressing dynamic context and promoting health equity over time. *Frontiers in public health*, 8, 134.



Jolles, M. P., Fort, M. P., & Glasgow, R. E. (2024). Aligning the planning, development, and implementation of complex interventions to local contexts with an equity focus: application of the PRISM/RE-AIM Framework. *International Journal for Equity in Health*, 23(1), 41.



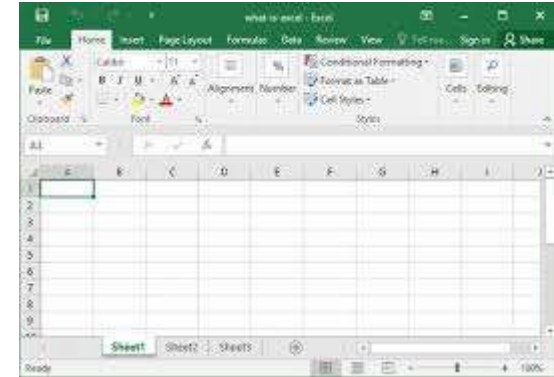
Fort, M. P., Manson, S. M., & Glasgow, R. E. (2023). Applying an equity lens to assess context and implementation in public health and health services research and practice using the PRISM framework. *Frontiers in Health Services*, 3, 1139788.

To capture REACH... you need to ... monitor

Recommendation 2:

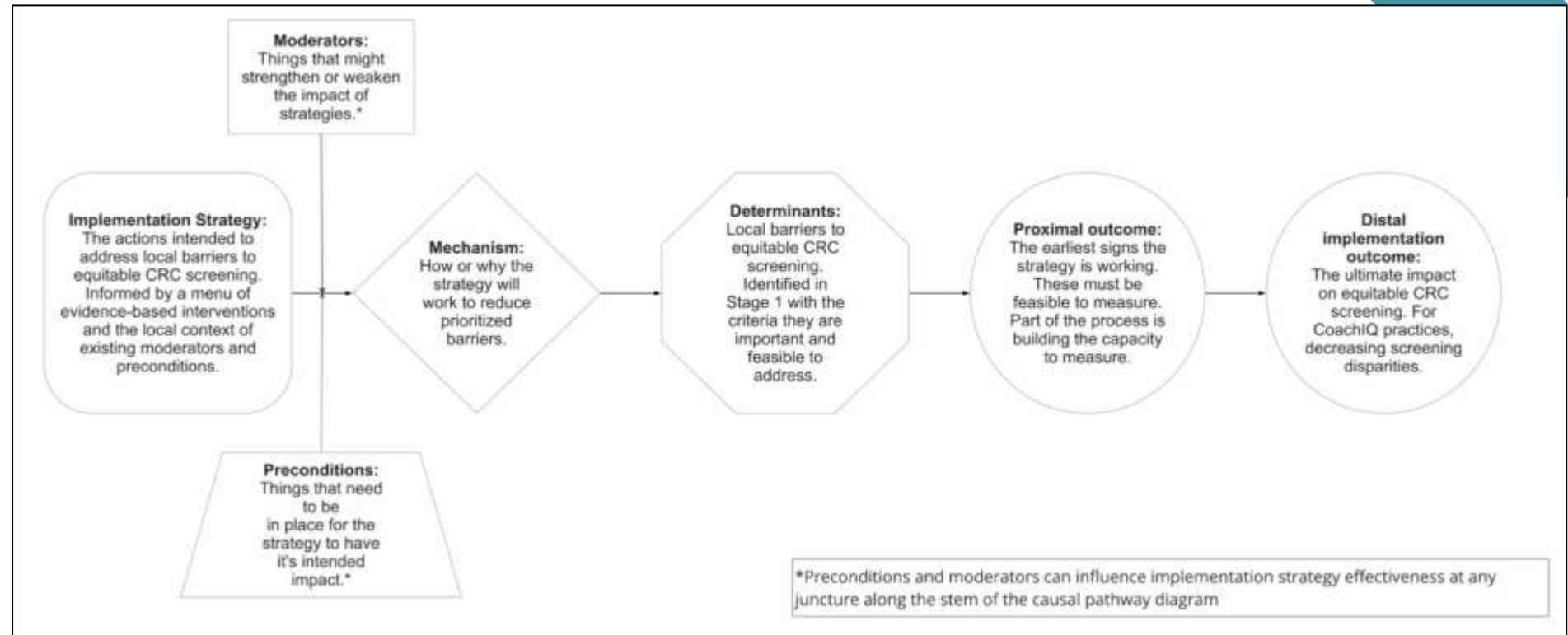
Need to recognize the infrastructure of the implementation process.

“Form and function” of evaluation process.



Point 3: Logic models, identification of mechanisms helps.

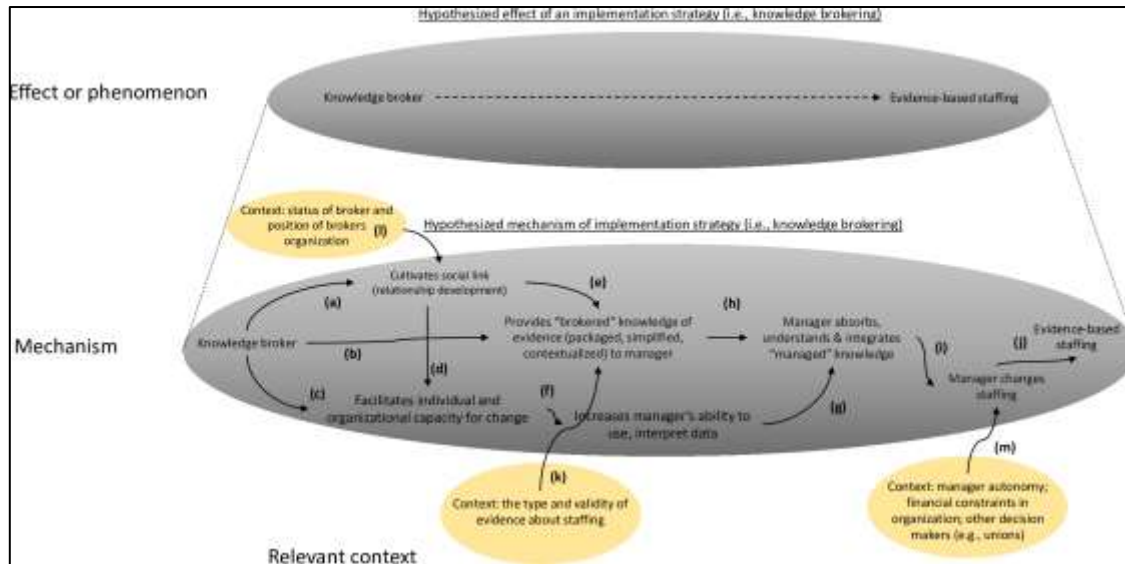
Ike, B., Johnson, A., Meza, R., & Cole, A. (2024). Integrating causal pathway diagrams into practice facilitation to address colorectal cancer screening disparities in primary care. *BMC Health Services Research*, 24(1), 1-10.



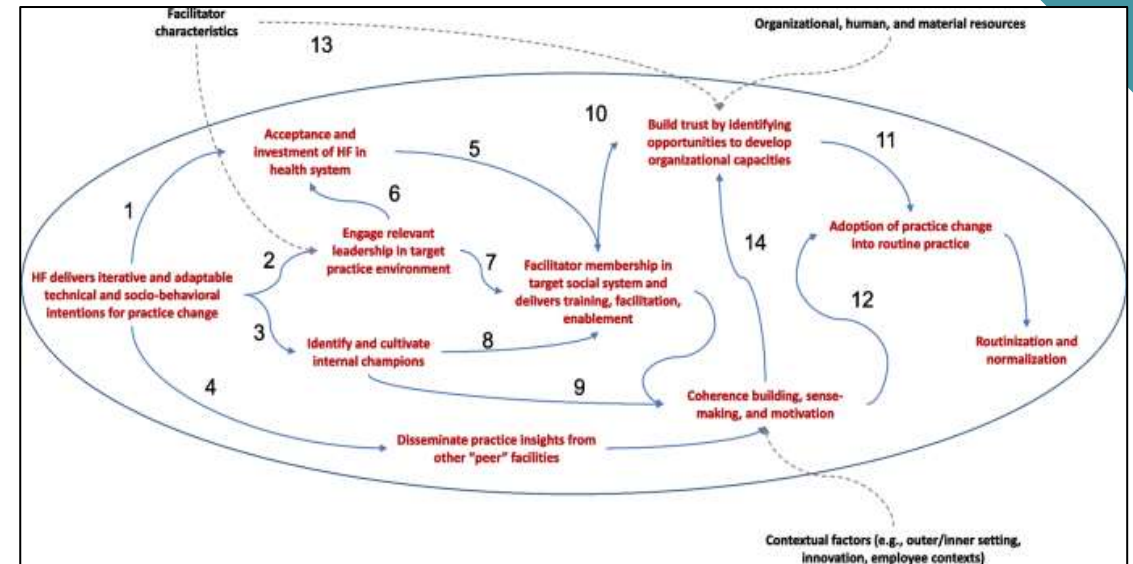
Lewis, C. C., Klasnja, P., Powell, B. J., Lyon, A. R., Tuzzio, L., Jones, S., ... & Weiner, B. (2018). From classification to causality: advancing understanding of mechanisms of change in implementation science. *Frontiers in public health*, 6, 136.

Klasnja, P., Meza, R. D., Pullmann, M. D., Mettert, K. D., Hawkes, R., Palazzo, L., ... & Lewis, C. C. (2024). Getting cozy with causality: Advances to the causal pathway diagramming method to enhance implementation precision. *Implementation Research and Practice*, 5, 26334895241248851.

Point 3: Logic models, identification of mechanisms helps.

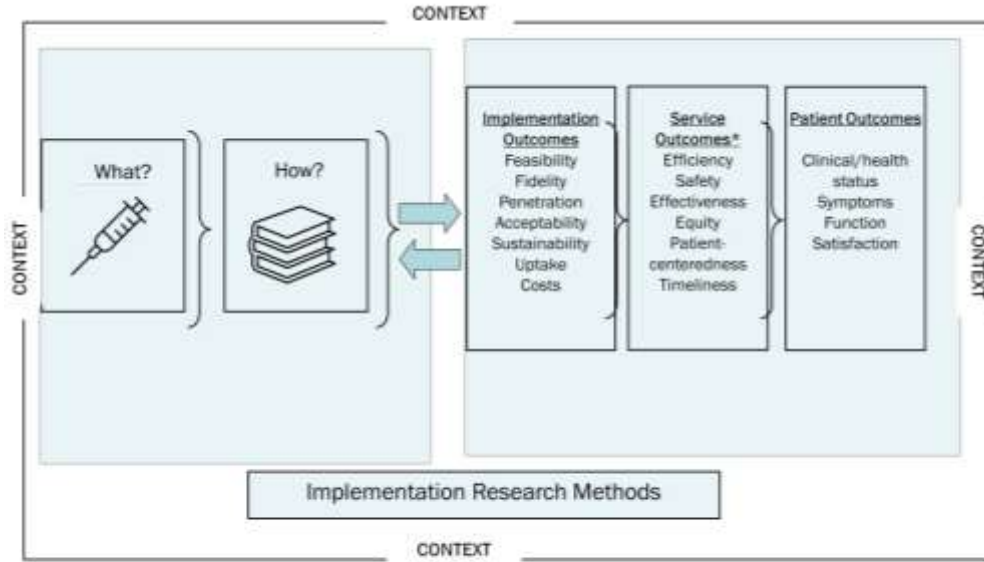


Geng, E. H., Mody, A., & Powell, B. J. (2023). On-the-go adaptation of implementation approaches and strategies in health: emerging perspectives and research opportunities. *Annual Review of Public Health*, 44(1), 21-36.

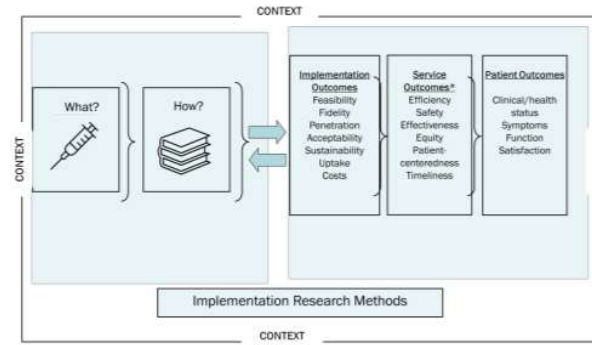


Kilbourne, A. M., Geng, E., Eshun-Wilson, I., Sweeney, S., Shelley, D., Cohen, D. J., ... & Parchman, M. L. (2023). How does facilitation in healthcare work? Using mechanism mapping to illuminate the black box of a meta-implementation strategy. *Implementation science communications*, 4(1), 53.

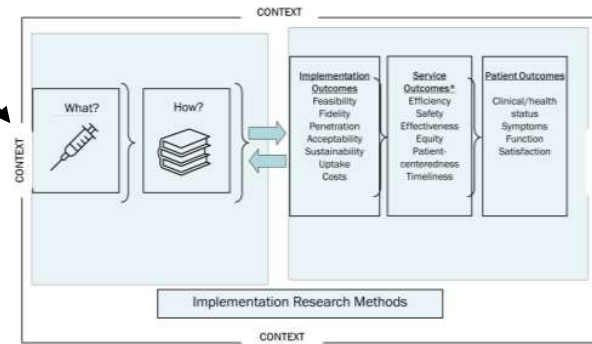
GENETIC TESTING



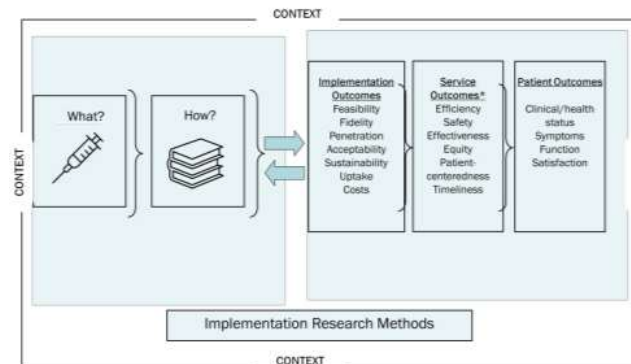
Proctor et al 2009 Admin. & Pol. in Mental Health Services



Proctor et al 2009 Admin. & Pol. in Mental Health Services

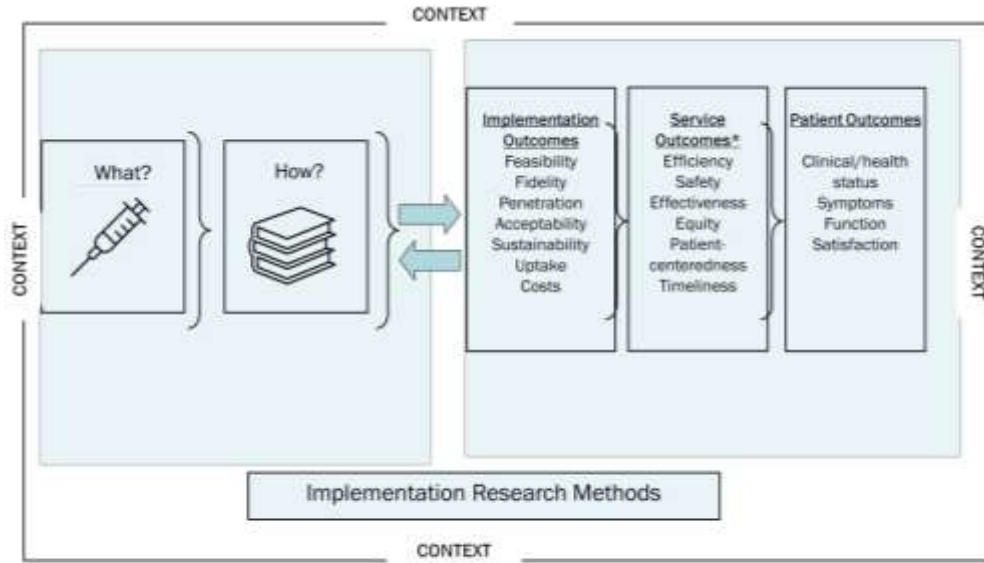


Proctor et al 2009 Admin. & Pol. in Mental Health Services



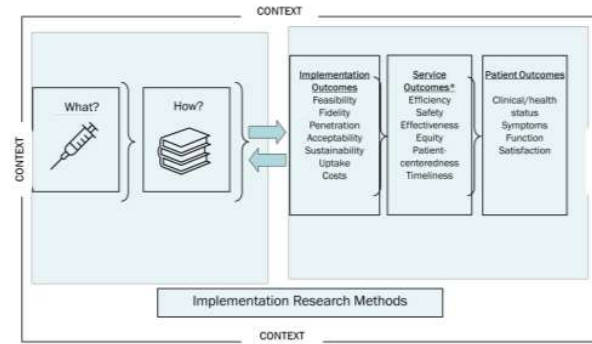
Proctor et al 2009 Admin. & Pol. in Mental Health Services

GENETIC TESTING

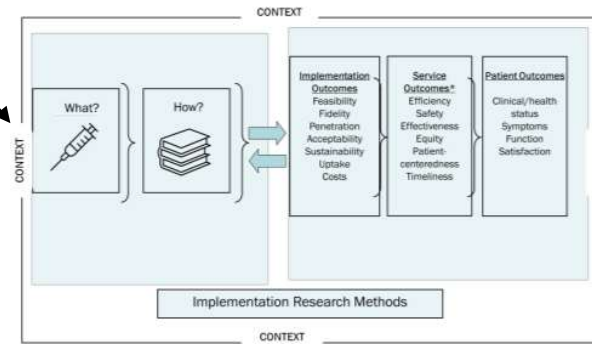


Proctor et al 2009 Admin. & Pol. in Mental Health Services

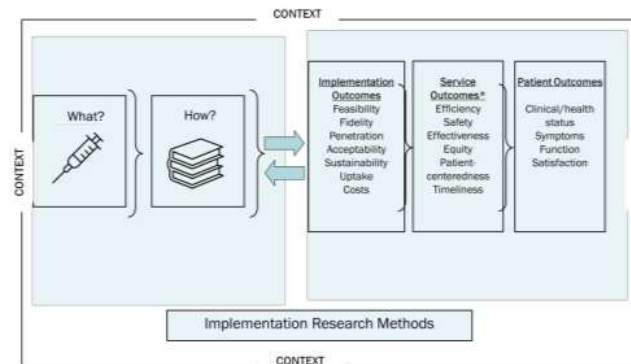
Organizational factors
Policy factors



Proctor et al 2009 Admin. & Pol. in Mental Health Services



Proctor et al 2009 Admin. & Pol. in Mental Health Services



Proctor et al 2009 Admin. & Pol. in Mental Health Services

Point 3: Logic models, identification of mechanisms helps – a side note

- Be attentive to:
 - Colonization (who centers the knowledge? You/us, the community?)
 - What are the potential pros and cons of your work?

Adsul, P., Shelton, R. C., Oh, A., Moise, N., Iwelunmor, J., & Griffith, D. M. (2024). Challenges and opportunities for paving the road to global health equity through implementation science. *Annual Review of Public Health*, 45.
Wa Thiong'o N. 1992.. *Decolonising the Mind: The Politics of Language in African Literature*. Nairobi:: East Afr. Publ.

Point 3: Logic models, identification of mechanisms helps.



Recommendation 3:

Take your time to develop your logic model, your causal pathway and your mechanism process.

Think: as you institutionalize the implementation process, how is it addressing/maintaining/increasing equity processes?

Point 4: Adapt!

Recommendation 4: Embrace complexity.

- Have a strength-focus perspective!
- As you adapt, think about the consequences of adaptation with your design/outcomes
- Track!
- HAVE FUN





Thank you

**Ana A. Baumann
Associate Professor
Division of Public Health Sciences
Washington University Medical
School
Email: abaumannwalker@wustl.edu**